

# MONTHLY MEMBERSHIP PROGRESS REPORT

LOCATION NIGERIA

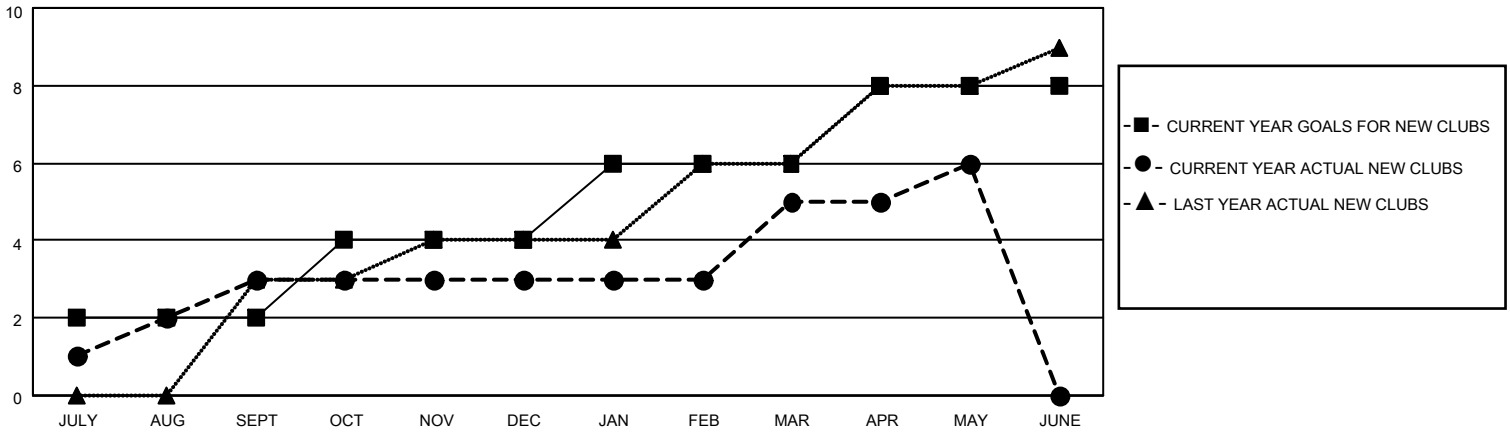
District 404 A1

Results as of: 5/31/2023

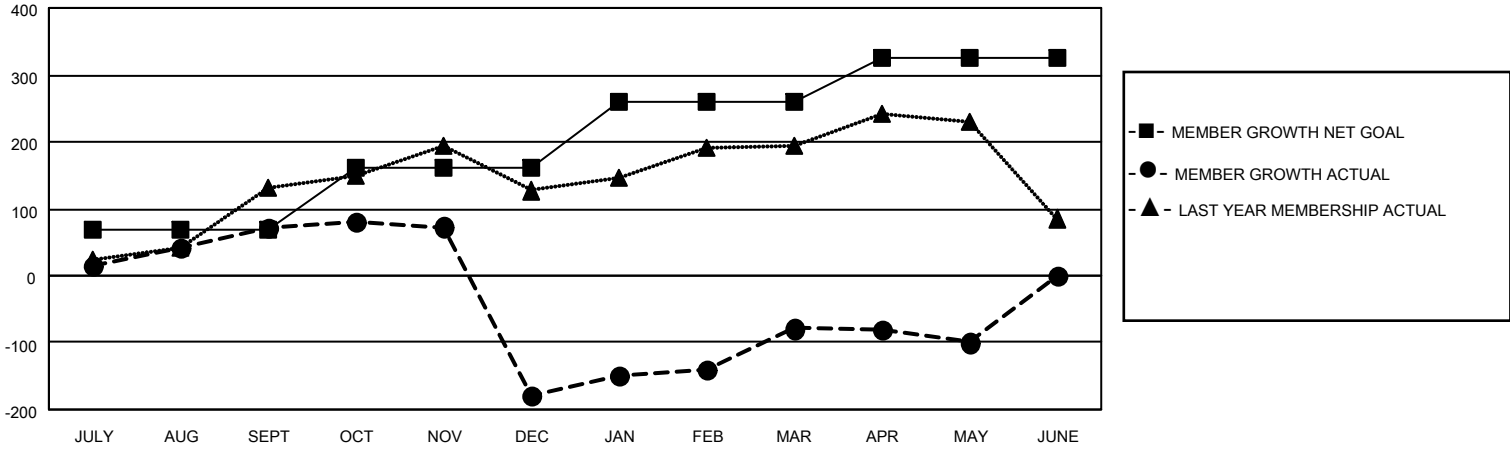
Clubs			
RESULTS FOR 2022-2023			
QUARTER	NEW CLUB GOAL	NEW CLUBS	DROPPED CLUBS
JULY/AUG/SEPT	2	3	0
OCT/NOV/DEC	2	0	9
JAN/FEB/MAR	2	2	0
APR/MAY/JUNE	2	1	0

Members			
RESULTS FOR 2022-2023			
QUARTER	MEMBER GROWTH NET GOAL	MEMBER GROWTH ACTUAL	DROPPED MEMBERS ACTUAL (including transfers)
JULY/AUG/SEPT	70	116	40
OCT/NOV/DEC	90	94	343
JAN/FEB/MAR	100	162	38
APR/MAY/JUNE	66	54	73

**GOALS AND ACTUAL NEW CLUBS CUMULATIVE**



**GOALS AND ACTUAL MEMBERS CUMULATIVE**



**DROPPED CLUBS: 9**

**72 CLUBS OF 127 ADDED 1 OR MORE NEW MEMBERS**

**GENDER DISTRIBUTION**

**DROPPED MEMBERS**

DECEASED	4
CLUB CANCELLED	145
OTHER	345
<b>TOTAL</b>	<b>494</b>

[CLICK HERE FOR CUMULATIVE MEMBERSHIP DATA](#)

MALE	1,518 (56.49%)
FEMALE	1,169 (43.51%)
NON BINARY	0 (0.00%)
PREFER NOT TO ANSWER	0 (0.00%)

TOTAL FAMILY UNIT MEMBERS 119

FAMILY MEMBERS PAYING HALF DUES 63